

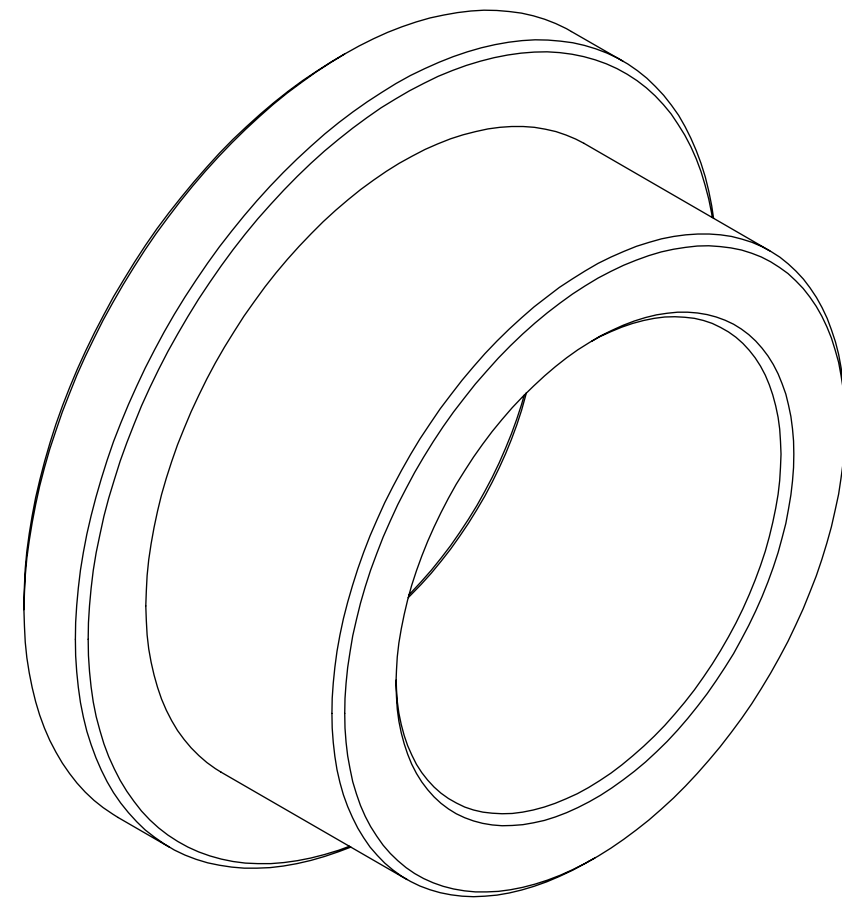
技术要求

- 绳轮节圆直径可根据限速器匹配确定, 有 $\phi 200$ 以及 $\phi 240$;
- 配重常规为 18kg 重晶石, 如用其他需注明, 具体参数见表。

				第一视角				实施日期				宁波奥德普电梯部件有限公司 NINGBO AODEPU ELEVATOR COMPONENTS CO., LTD.			
				CC 关键特性											
				设计				标准化				阶段标记			
				审核								重量			
				工艺				批准				第 张 共 张			
标记				更改内容				签名				OX-300A			
处数								年月日							

张紧装置

OX-300A

A technical drawing of a circular object, possibly a lens or a disk, shown in a top-down view. The drawing consists of three concentric circles. The outermost circle is the largest, followed by a middle circle, and then an innermost circle. A crosshair is drawn through the center of the circles, consisting of a horizontal line and a vertical line. The lines are thin and black, and the background is white. The drawing is centered on the page.

Technical drawing of a stepped shaft. The drawing shows a shaft with three different diameters. The top section has a diameter of $\Phi 20$ and a length of 12. The middle section has a diameter of $\Phi 12$ and a length of 18. The bottom section has a diameter of $\Phi 16$ and a length of 0.05. The total length of the shaft is 30. The drawing also shows the transition between the sections, with a fillet radius of 0.25.

						20# / Φ20	宁波奥德普电梯部件有限公司			
								衬套(双)		
标记	处数	分 区	文件更改号	签 名	年月日					
设 计			标准化				阶段标记			
校 对									0X300.3-3(S)	
审 核								0.01		6:1
工 艺			批 准			物料编号: 30500030				