

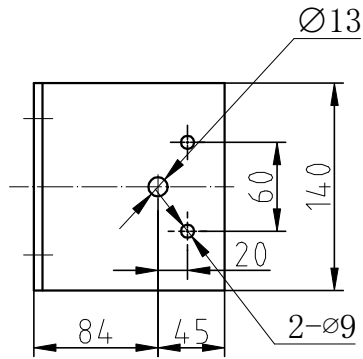
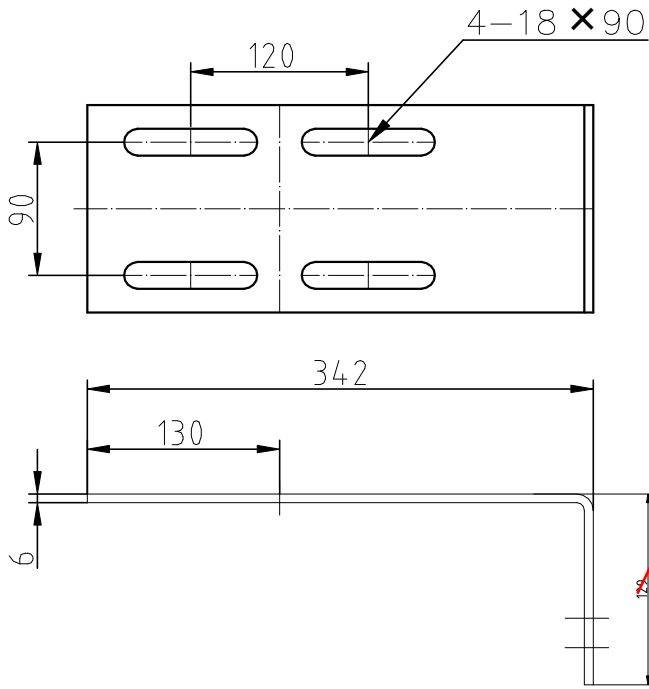
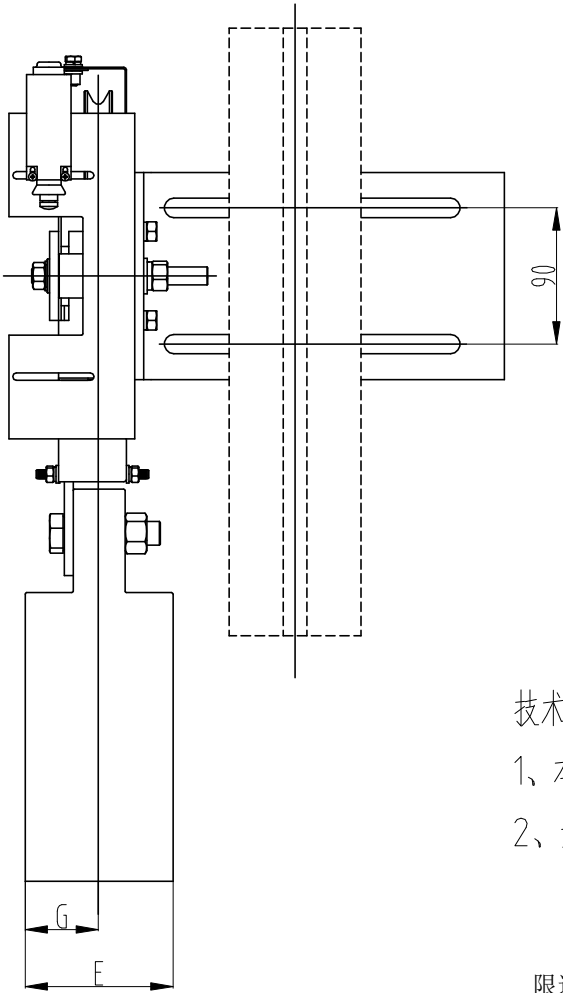
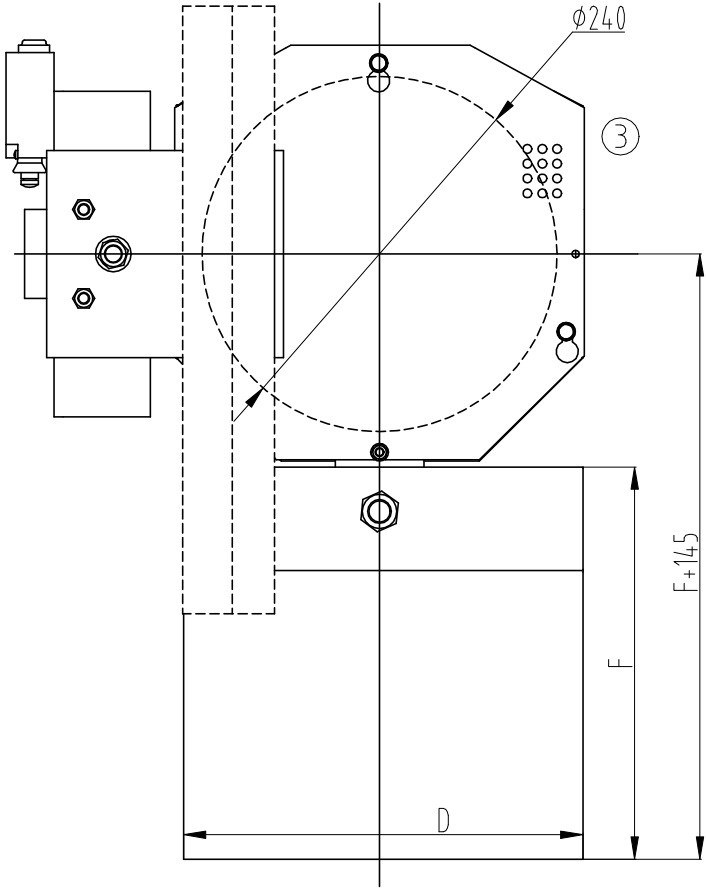


ALL DIMENSIONS METRIC

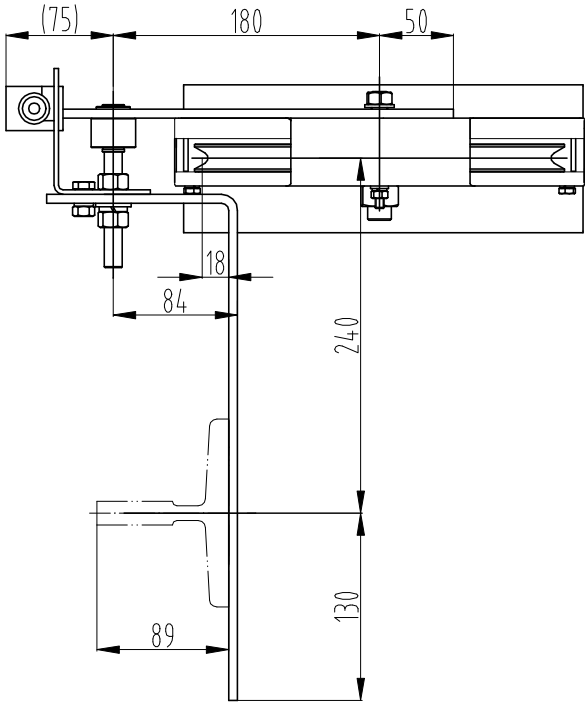
																					WELDS		
A3		FIRST ANGLE	LENGTH/ DIAMETER	0.5-6	>6-30	>30-120	>120-400	>400-1000	>1000-2000	>2000-4000	RADIUS/ CHAMFER	0.5-3	>3-6	>6	ANGLE (shorter side length)	0-10	>10-50	>50-120	>120-400	>400	<div>Z = LEG LENGTH ANSI/AWS A2.4-98 WELDING SYMBOLS ARE USED ON THIS DRAWING. REFER TO DRAWING AAA26ADJ FOR CONVERSION TO ISO SYMBOLS.</div>	OTHER SIDE	ARROW SIDE
		TOLERANCE	± 0.1	± 0.2	± 0.3	± 0.5	± 0.8	± 1.2	± 2	TOLERANCE	± 0.2	± 0.5	± 1	TOLERANCE	± 1°	± 0.5°	± 0.3°	± 0.15°	± 0.1°				



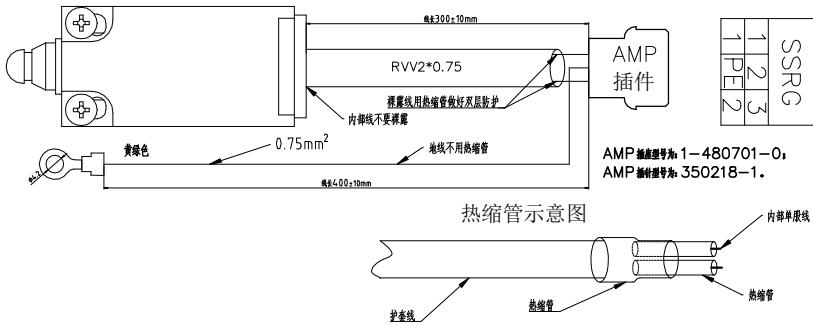
安装底板

技术要求:

- 1、本装置左右置可以现场安装时拆装螺栓螺母调整;
- 2、开关型号UKS，防水等级IP67，AC-15 AC220/2A，DC-13 DC110V/0.3A;



④ 限速器涨紧开关接线示意图



件号	型号	钢丝绳直径	重块重量 (kg)	D	E	F	G	备注
VKS6Z062001	② ØX-300	Φ 8mm	18	270	100	265	50	重晶石
VKS6Z062002	② ØX-200		30	300	140	305	70	
VKS6Z062003	② ØX-300	Φ 6mm	18	270	100	265	50	重晶石
VKS6Z062004	② ØX-200		30	300	140	305	70	

④	增加接线图;	2024.10.23	闵传宏	王勇新	24A01	Volslift Schindler	涨紧装置	VKS6Z062		
③	修改防护罩为全封闭型的;	2023.8.30	闵传宏	王勇新	23801					
②	2处, 修改规格表中“型号”;	2022.7.6	闫世英	王勇新	22701	绘图 DRAWN 王勇新 校对 CHK 李洋 批准 APPD 闵传宏 日期 DATE 2021.02.04	材料: 组件 MATERIAL:	首次下发版本 FIRST VERSION	重量 WEIGHT	比例 PROPORTION
①	2处, 增加件号VKS6Z062003、VKS6Z062004;	2022.5.7	王勇新	闵传宏	220501			21201		1:6
标记 MARK	更改原因及说明 CHANGE REASONS AND INSTRUCTIONS	更改日期 CHANGE DATE	更改 CHANGE	审查 CHECK	版本 VERSION			SHEETS 1	1	SHEET