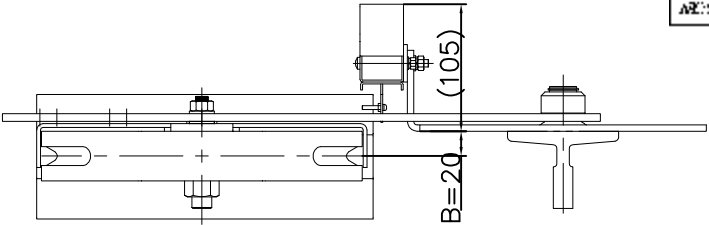


技术说明
1. 图中参数A可根据摇杆
孔位需要选择290,350,
365, 405,420;
2. 绳轮节圆直径可根据限
速器匹配确定,有Φ200
及Φ240;
3. 配重常规为18kg 重晶石
需用其它需注明,具体参数
见表.

审核	设计
审核	设计
审核	设计




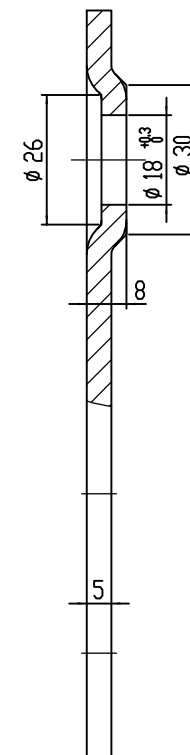
						宁波奥德普电梯部件有限公司		
						张紧装置		
						OX-300U		
标记	处数	分区	文件更改	签名	年月日	阶段标记	重量	比例
设计			标准化				13.5+	1:4
校对								
审核								
工艺			批准			物料编号:		

签(通)用件登记
旧底图总号
底图总号
签字
日期

Technical drawing of a rectangular plate with the following specifications:

- Overall Dimensions:** 240 (width) x 150 (height).
- Top Edge:** A horizontal line is drawn 30 units from the top edge, with a dimension line indicating this distance.
- Bottom Edge:** A horizontal line is drawn 30 units from the bottom edge, with a dimension line indicating this distance.
- Central Feature:** A circular hole with a diameter of 180 units, centered on the plate. It is shown with concentric circles and a dashed outer boundary.
- Left Side Feature:** A horizontal slot with a width of 2-22x90, centered vertically. It is shown with rounded ends and a dashed center line.
- Right Side Feature:** A horizontal slot with a width of 2-22x90, centered vertically. It is shown with rounded ends and a dashed center line.
- Top Right Feature:** A circular hole with a diameter of 2-Ø 10, located near the top right corner. It is shown with a dashed center line.
- Bottom Right Feature:** A circular hole with a diameter of 2-Ø 10, located near the bottom right corner. It is shown with a dashed center line.
- Material and Finish:** The plate is made of material 6.3, indicated by a triangle and the number 6.3 on the right side.

其余 



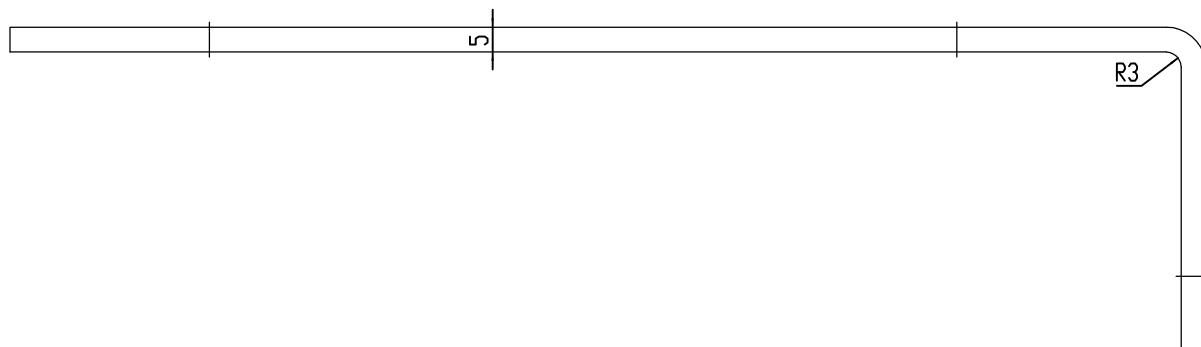
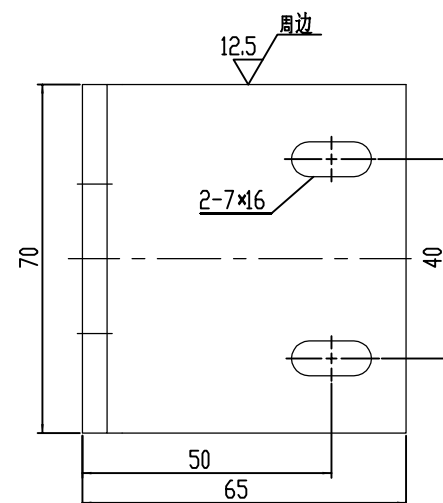
材料名称	颜色	批号
30530001	RAL5015黄色	1.01
30530002	RAL6003白色	1.02
30530003	RAL1014灰色	1.03

技术说明

1. 本件边角去毛刺, 未注明内圆角为 $R \leq 1 \text{ mm}$;
2. $\phi 18$ 为冲压成型后再扩孔铰孔等制作, 要求平整无偏斜;
3. 完成后表面喷涂色漆, 颜色按公司标准, 特殊按生产指令。

						Q235A/5.0	宁波奥德普电梯部件有限公司		
							安装底板		
标记	处数	分区	文件更改号	签名	年月日		阶段标记	重量	比例
设计			标准化						
校对							1.19	1:1	
审核						物料编号: 20500000			
工艺			批准			□X300.1-1			

Technical drawing of a structural member with two oval holes. The drawing shows a top view with dimensions: total width 250, distance between hole centers 150, and distance from right hole center to right edge 125. A label "2-22x70" points to the left hole. A centerline is shown between the holes.



柱位号	坐标值	高程	高程差
2072102	0.050×0.01 0.0750 ± 0.002	1.21	
	0.050×0.02 0.1250 ± 0.004	1.23	
	0.050×0.05 0.1750 ± 0.008	1.20	

						Q235A/5.0	宁波奥德普电梯部件有限公司	
标记	处数	分 区	文件更改号	签 名	年月日			
设 计			标准化				阶段标记	重量 比例
校 对								开关架弯板 □X300.4-1
审 核							0.66 1:1	
工 艺			批 准			物料编号：		