

Technical drawing of a mechanical assembly, likely a pump or motor component, showing a cross-section and a top view. The drawing includes dimensions and labels for various parts.

**Dimensions:**

- Overall width: 230
- Inner width: 142
- Overall height: 155
- Bottom flange height: 70
- Flange thickness: 6
- Flange hole diameter: 5
- Flange hole offset: 4
- Internal width: 108
- Overall bottom width: 240
- Internal offset: 10

**Labels:**

- 1: Points to the top flange assembly.
- 2: Points to the main body of the component.
- 3: Points to the bottom flange assembly.
- 4, 5, 6: Points to the flange holes and thickness.
- 7: Points to the internal structure.
- 8: Points to the internal structure.
- 9: Points to the internal structure.

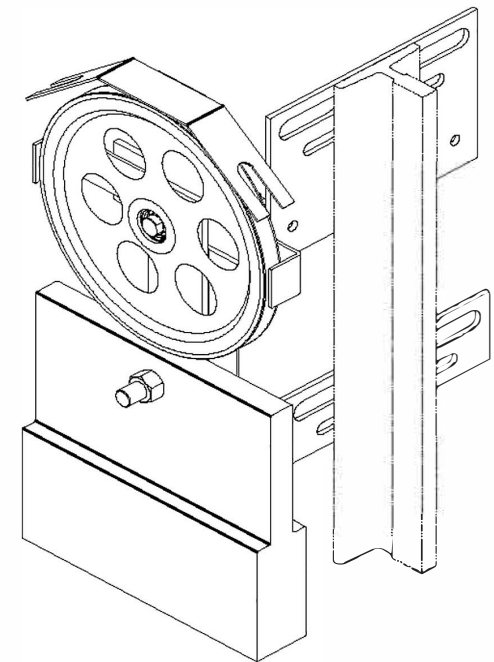
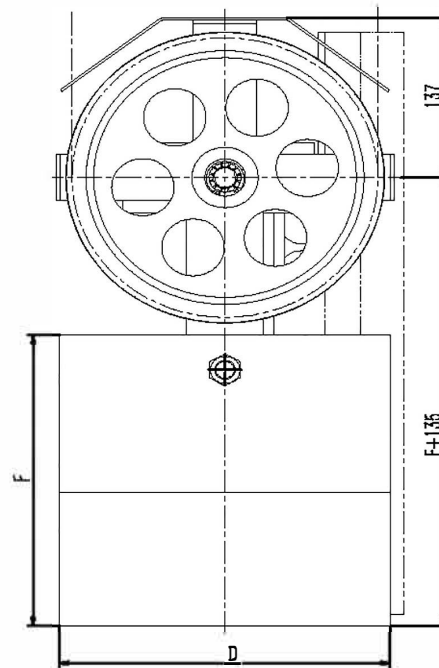


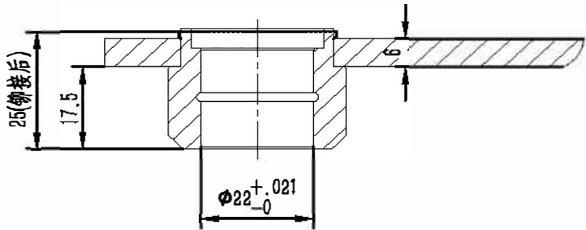
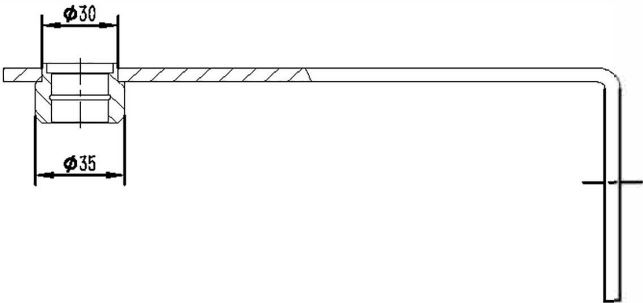
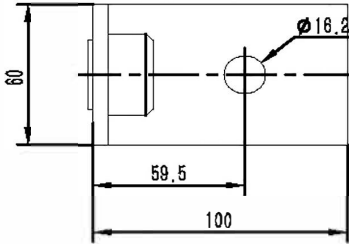
图 10-10 前视图

Technical drawing showing the front view of a mechanical part. The drawing includes dimensions: a total width of 240, a central width of 120, a total height of 200, a central height of 105, and a distance of 212 from the center to the right edge. A hole with a diameter of  $\phi 200$  is located on the left side, with a distance of 59.5 from the center to the hole's center. A dimension of 29.5 is shown at the bottom left. The text '可对称装配' (Symmetrical assembly) is written vertically on the right side.

						宁波奥德普电梯部件有限公司					
标记	处数	分 区	文件更改号	签 名	年、月、日				涨紧装置(重锤式)		
设计			标准化			设计标记		重量		比例	
校 对								27.15	1:4	OX300	
审 核											
工 艺			批 准			共 1 张		第 1 张			

基本尺寸	0~6	6~30	30~120	120~400	400~1000	1000~2000	2000~4000
公差	0.1	0.2	0.3	0.5	0.8	1.2	2.0

80011159 OX-300张紧装置(200-90-240-29.5) 200-6 18kg重晶石 RAL6005本色 全英文 苏州银海 P2



借(通)用件登记  
旧底图总号

底图总号

签字

日期

2	OX300.2-2	摇杆轴套	1	30#/ $\phi 35$	0.09	0.09	
1	OX300.2-1	摇杆板件	1	Q235A/ $\phi 6.0$	1.27	1.27	
序号	代号	名称	数量	材料说明	重量	总重	备注
标记	处数	分区	文件更改号	签名	年、月、日		
设计			标准化			阶段标记	重量
校对							1.38
审核							1.2
工艺			批准			共 1 张	第 1 张

宁波奥德普电梯部件有限公司

摇杆组件

OX300.2