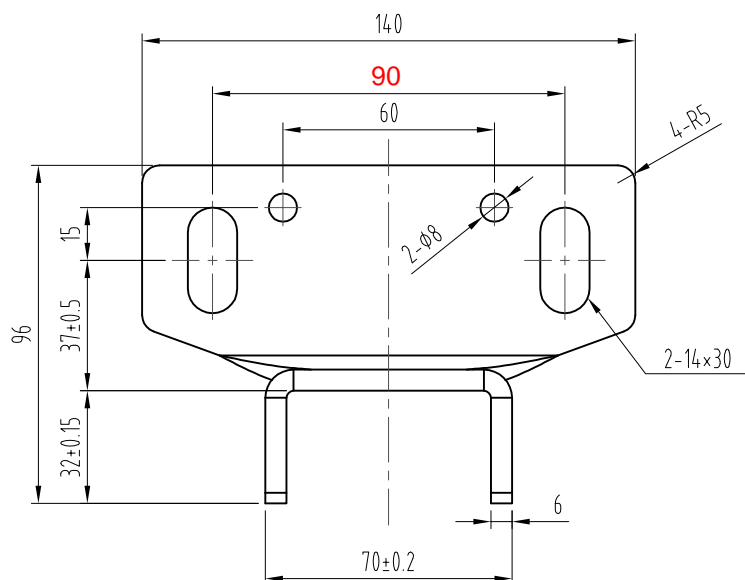
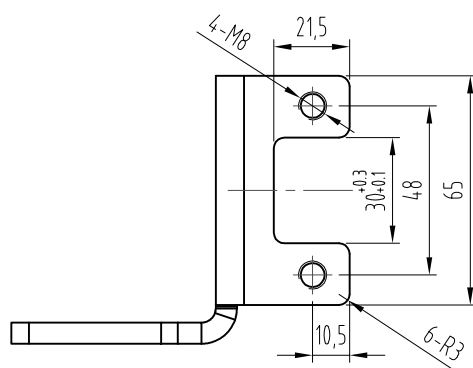
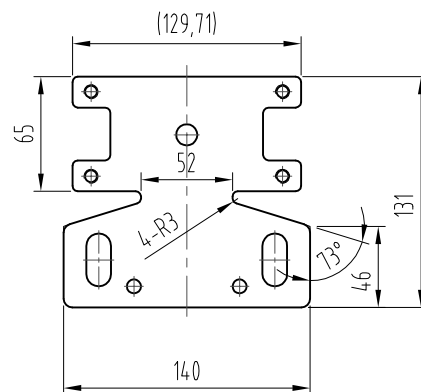


Technical drawing of a mechanical part, likely a bracket or support. The drawing shows a side view with a central vertical section and a horizontal base. A central hole is indicated with a diameter of $\phi 12$. The overall height of the part is dimensioned as 76, and the height of the upper section is dimensioned as 33. The drawing includes a center line for the hole and a dashed line for the hidden part of the hole.



钣金展开图
比例 2:1



- 1、零件表面无毛刺、开裂等现象；
- 2、未注明公差按GB/T1184-K、GB/T1804-m执行；

						<div> 宁波奥德普电梯部 NINGBO AODERU ELEVATOR COMPONENTS CO., LTD.</div>			
							Q235A/5.0		
								导靴底座	
标记	处数	分区	更改文件号	签名	年、月、日				
设计	舒佳乐	2019.01.18	标准化			阶段标记	重量	比例	OX-029BY.1-1
								1:1	
审核									
工艺			批准			共 张 第 页			