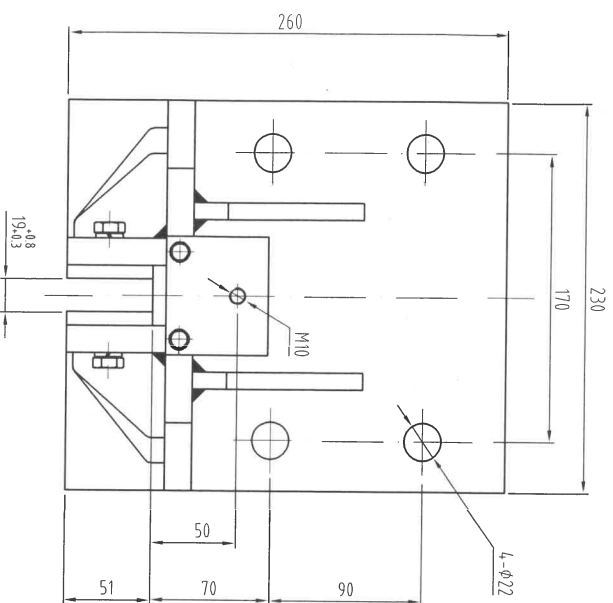
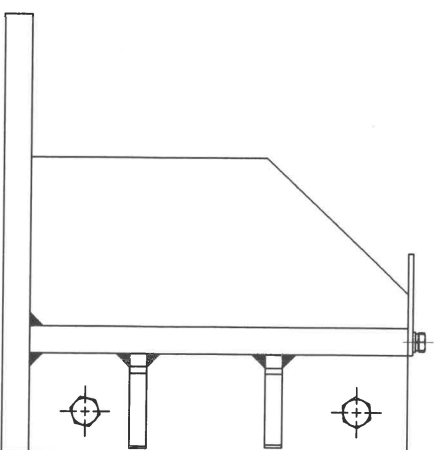


Technical drawing of a tapered metal plate. The plate has a trapezoidal shape with a top width of 240 and a bottom width of 250. It features two vertical mounting holes, each with a diameter of 10. The plate is shown with a cross-section view on the right, indicating a thickness of 10. The drawing includes dimension lines and labels for the width, height, and hole diameter.



1、額定速度： $V \leq 0.63 \text{ m/s}$ ；  
2、導軌寬度：19mm。

[illegible]